

Highland Park model home

*3 bedroom 2 bath, 2 car garage
Elegant yet affordable garden home
only minutes from Scott & White
1858 sq. ft.*

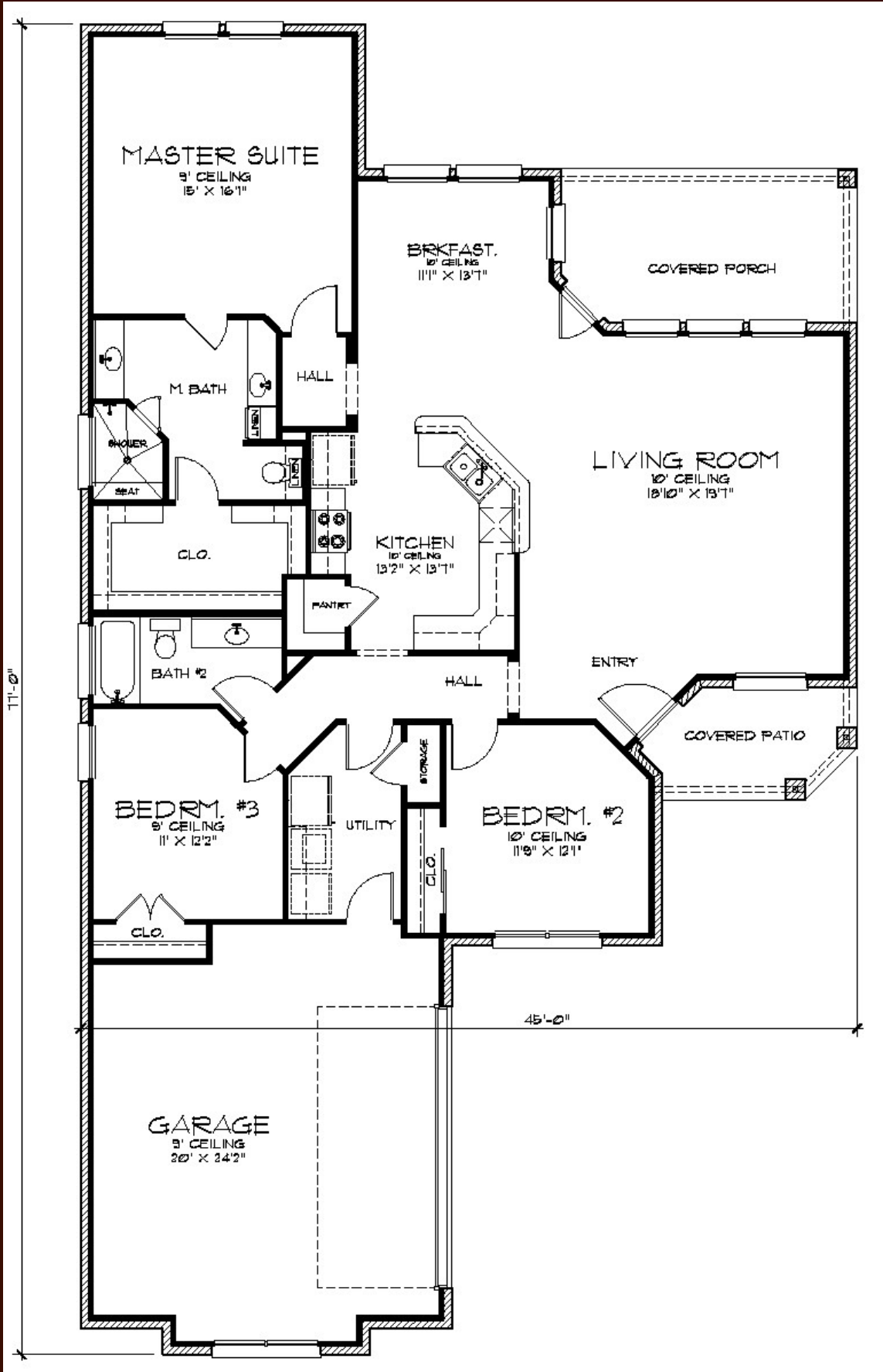


www.stellarhomes.us

254-933-8807



Surround yourself in style with this beautiful garden home loaded fabulous features and an open family room, kitchen and breakfast area. Granite countertops, tumbled travertine backsplash, recessed can lighting and custom cabinets. The morning area opens to a covered patio and fenced yard with sprinkler system. Featuring a large master bedroom and bath with large shower with sitting bench, double sinks and a very nice walk-in closet. The two tone brick/stone exterior gives this home stunning curb appeal.



MASTER SUITE

9' CEILING
15' X 16'-1"

BRKFAS.
10' CEILING
11' X 13'-1"

COVERED PORCH

LIVING ROOM
10' CEILING
18'-10" X 13'-1"

M BATH

HALL

SHOWER

SEAT

CLO.

KITCHEN
10' CEILING
13'-2" X 13'-1"

PANTRY

BATH #2

HALL

ENTRY

COVERED PATIO

BEDRM. #3
9' CEILING
11' X 12'-2"

UTILITY

BEDRM. #2
10' CEILING
11'-9" X 12'-1"

STORAGE

CLO.

CLO.

45'-0"

GARAGE
9' CEILING
20' X 34'-2"

11'-0"